

Why Don't We - Lotus Inn

(♩ = 136)



37

System 1 (Measures 37-44): Treble clef contains a melody with eighth and sixteenth notes. Bass clef contains a simple accompaniment with whole and half notes.

45

System 2 (Measures 45-51): Treble clef continues the melody. Bass clef accompaniment includes some chords and rests.

52

System 3 (Measures 52-57): Treble clef features more complex rhythmic patterns. Bass clef has a steady accompaniment.

58

System 4 (Measures 58-64): Treble clef melody continues. Bass clef accompaniment is consistent.

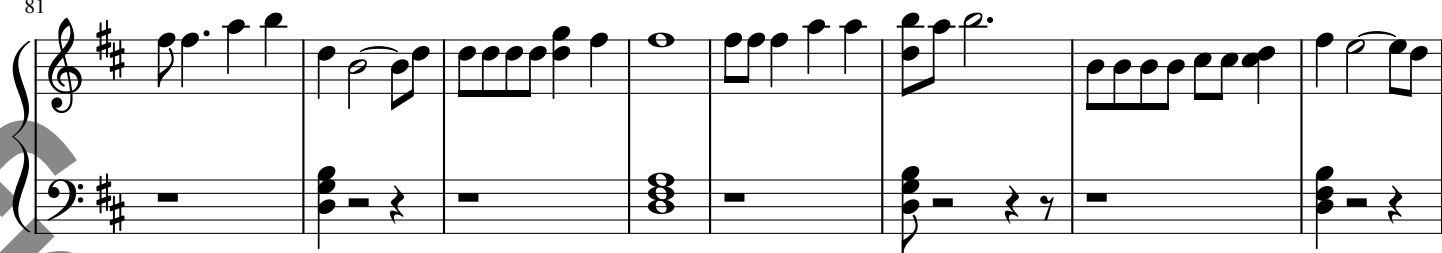
65

System 5 (Measures 65-71): Treble clef has a melodic line with some rests. Bass clef accompaniment includes a repeat sign.

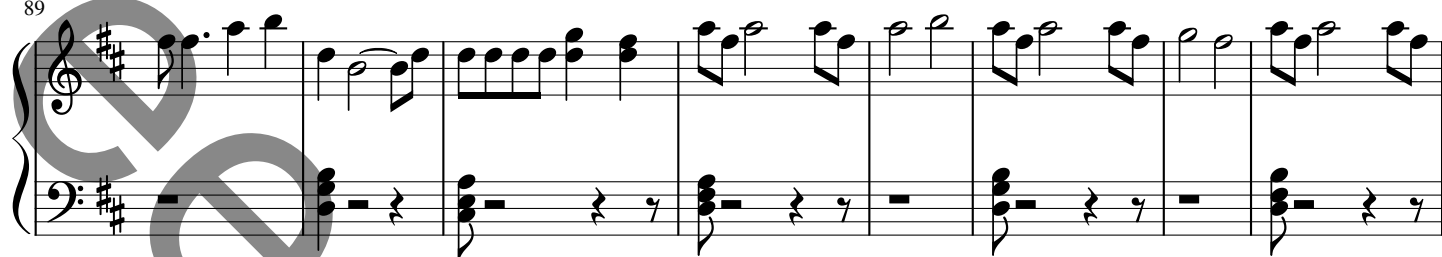
72

System 6 (Measures 72-78): Treble clef melody continues. Bass clef accompaniment includes chords and rests.

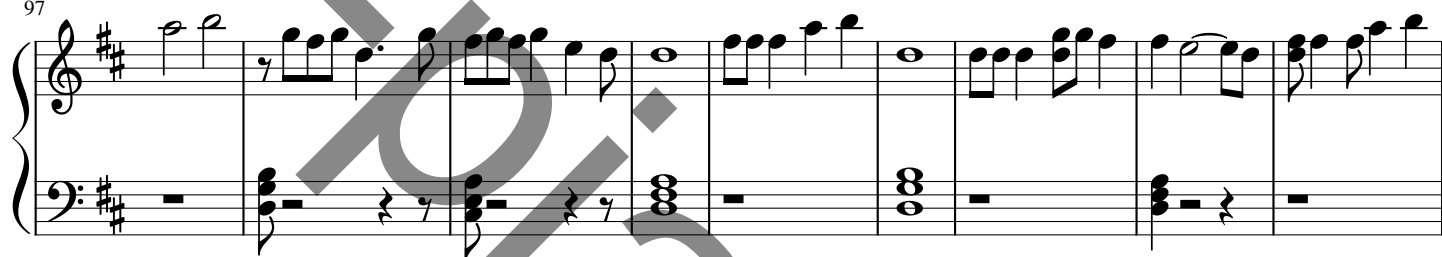
81



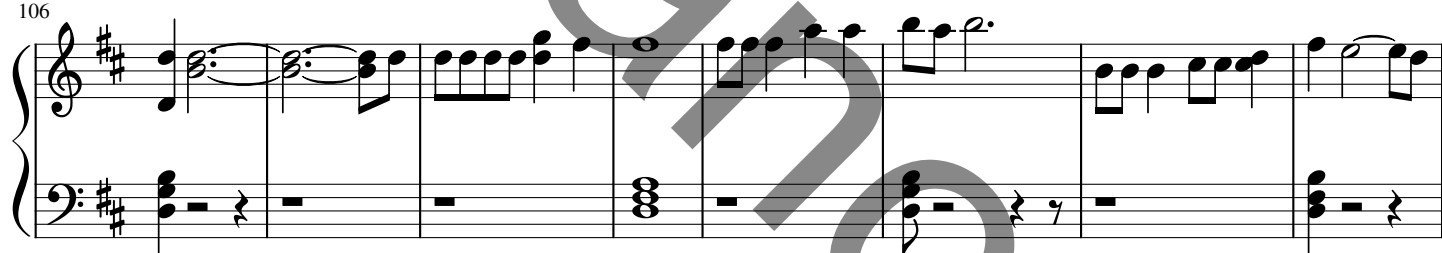
89



97



106



114



124

