

A Cover Is Not The Book

(from Mary Poppins Returns)

Measures 1-4 of the piano accompaniment for 'A Cover Is Not The Book'. The music is in 4/4 time, key of D major (indicated by two sharps). The melody in the right hand features eighth and sixteenth notes, while the left hand provides a harmonic accompaniment with chords and single notes.

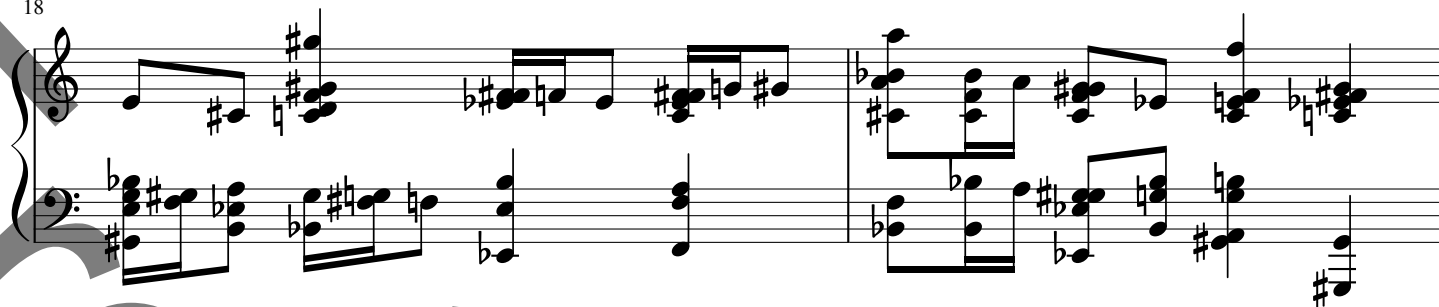
Measures 5-8 of the piano accompaniment. Measure 5 is marked with a '5' above the staff. The right hand continues with a melodic line, and the left hand maintains the harmonic support with chords and moving lines.

Measures 9-13 of the piano accompaniment. Measure 10 is marked with a '10' above the staff. Measure 12 contains a triplet of eighth notes in the right hand, marked with a '3' above the staff. The musical texture remains consistent with the previous measures.

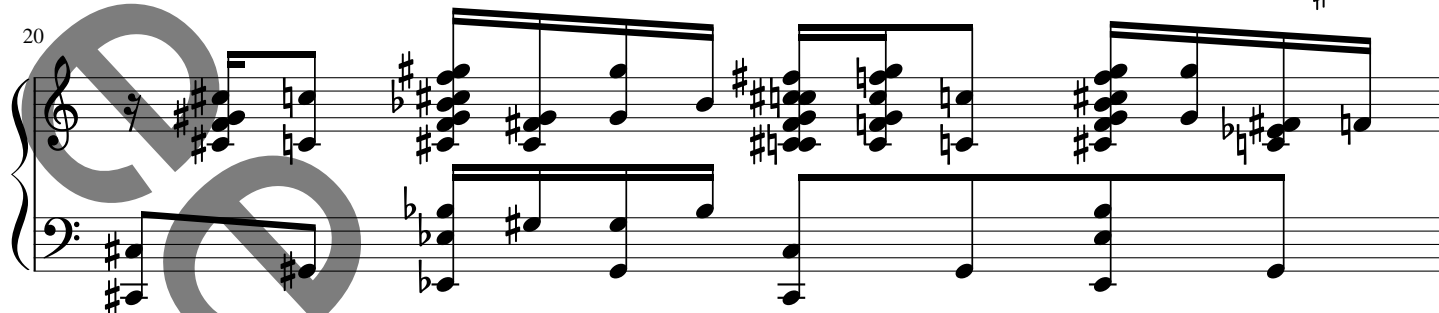
Measures 14-15 of the piano accompaniment. Measure 14 is marked with a '14' above the staff. The right hand features a more active melodic line with eighth notes, while the left hand continues with a steady accompaniment.

Measures 16-20 of the piano accompaniment. Measure 16 is marked with a '16' above the staff. The piece concludes with a final chord in the right hand and a sustained bass note in the left hand.

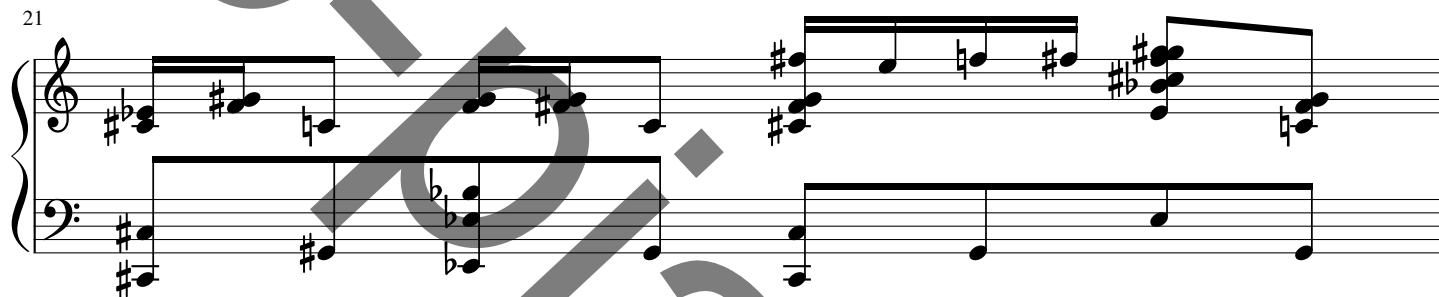
18



20



21



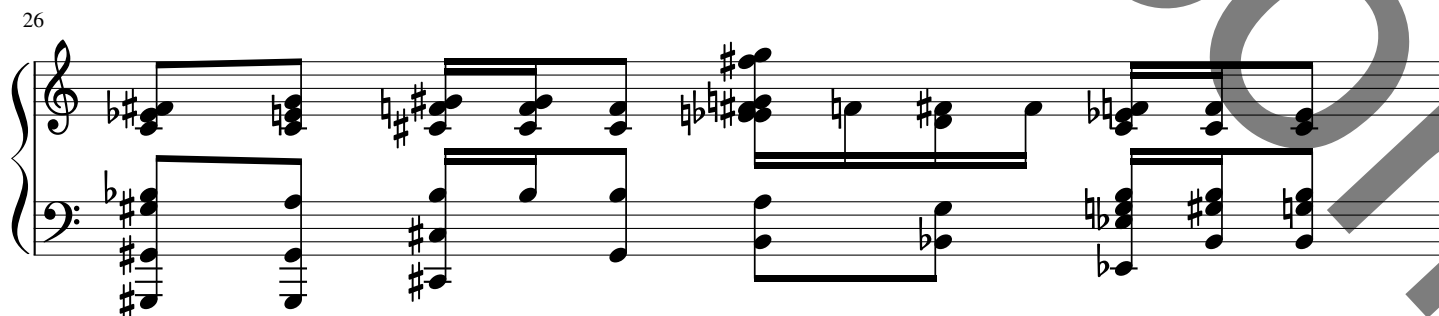
22



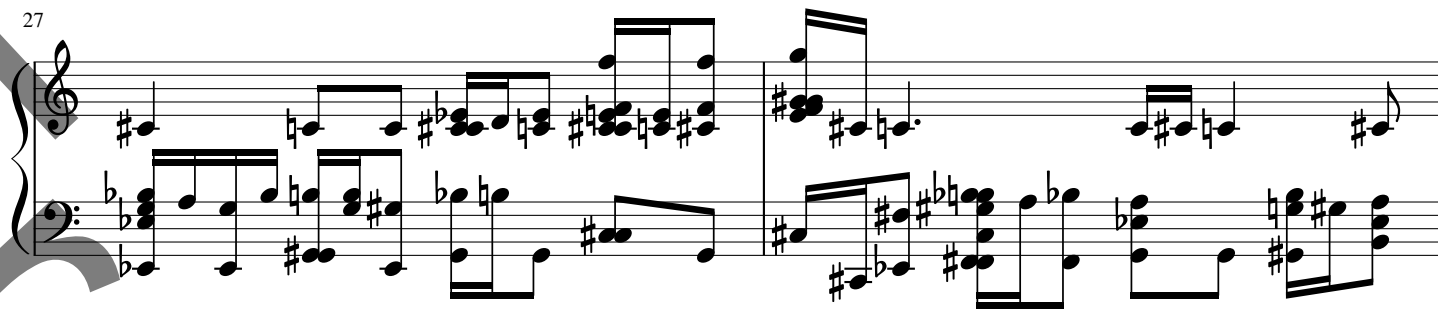
24



26



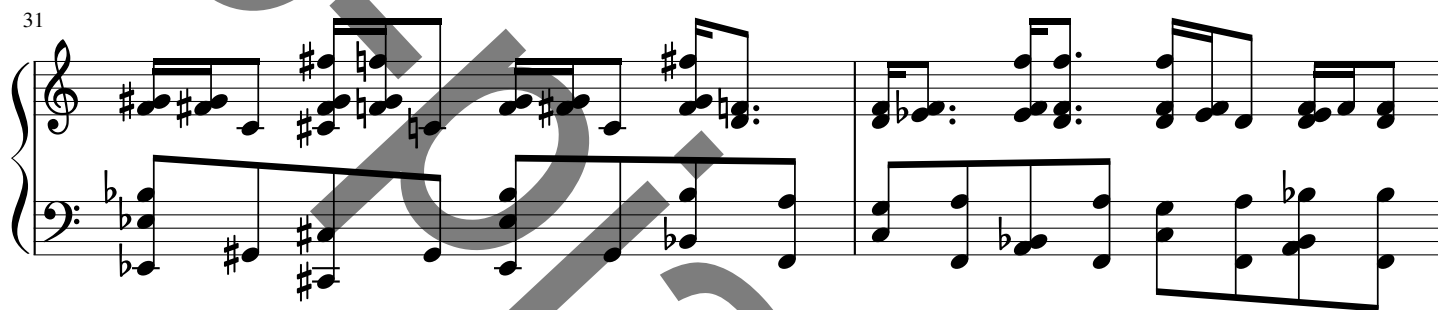
27



29



31



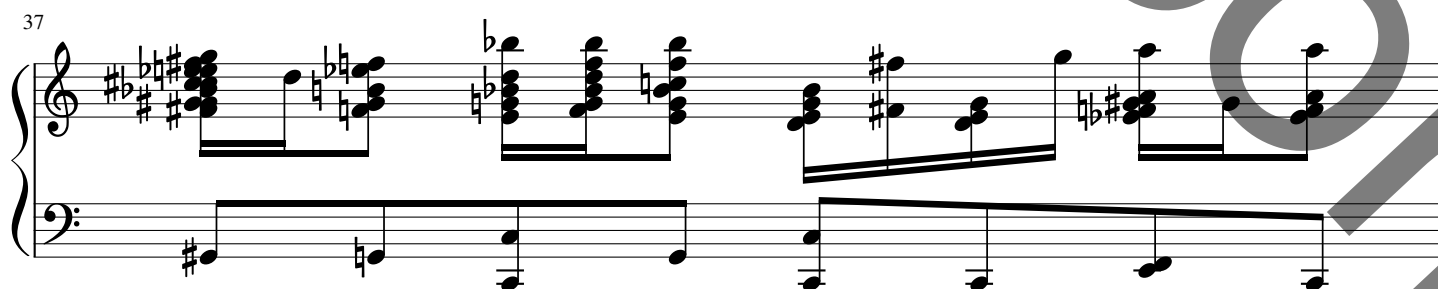
33



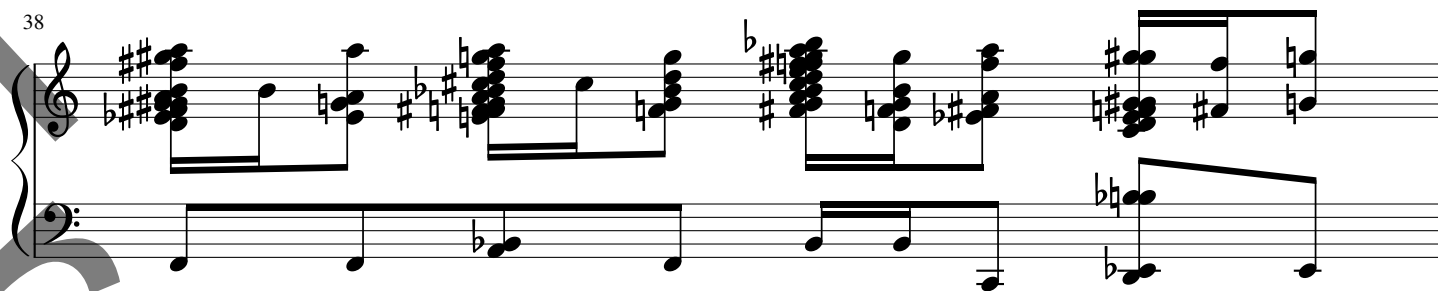
35



37



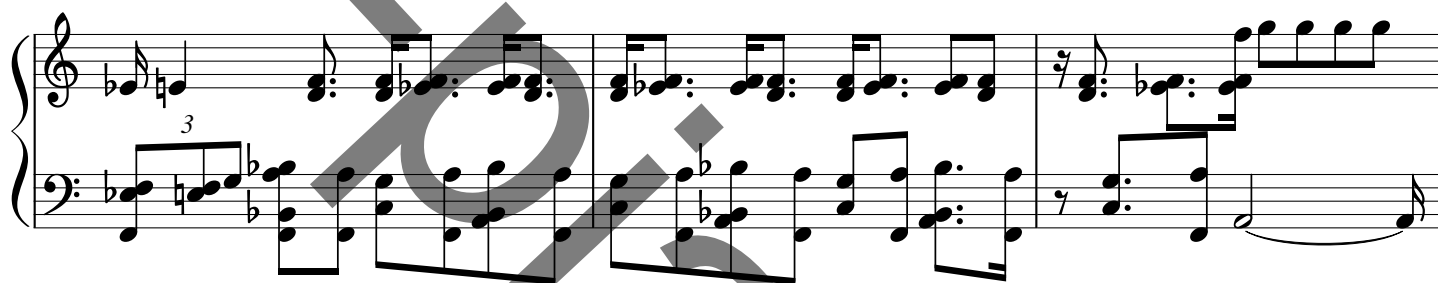
38



39



41



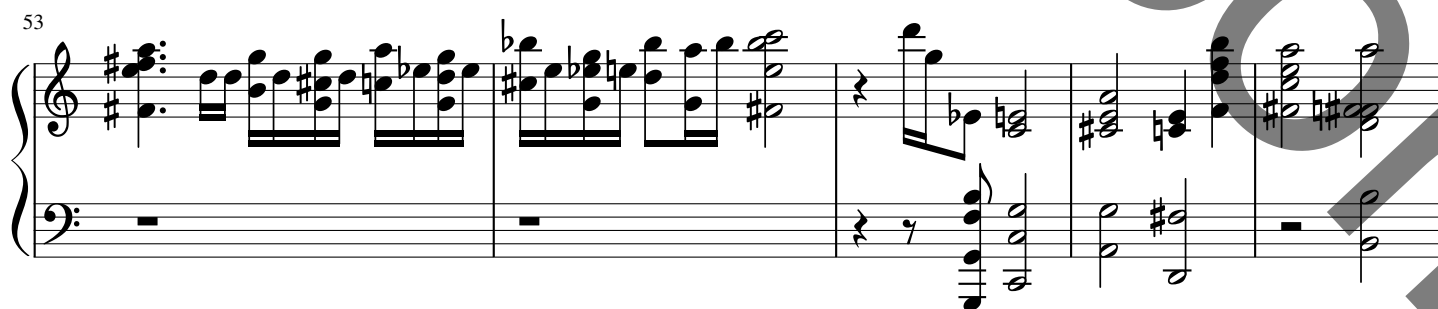
44



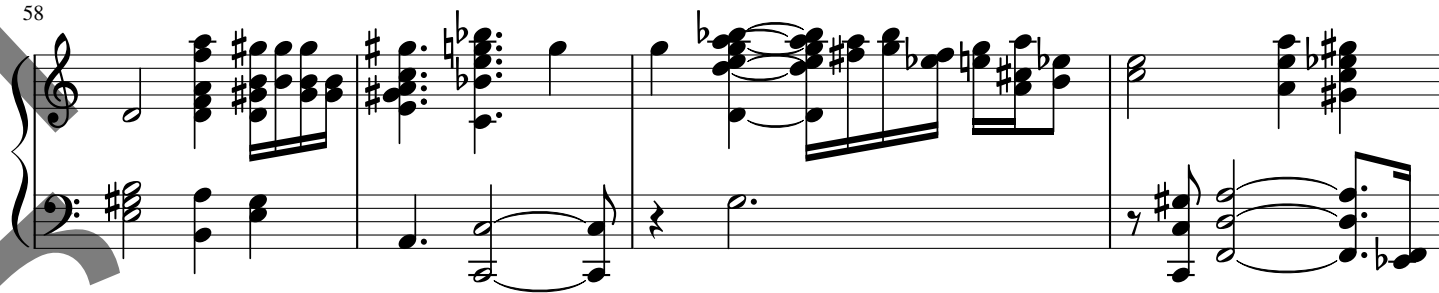
49



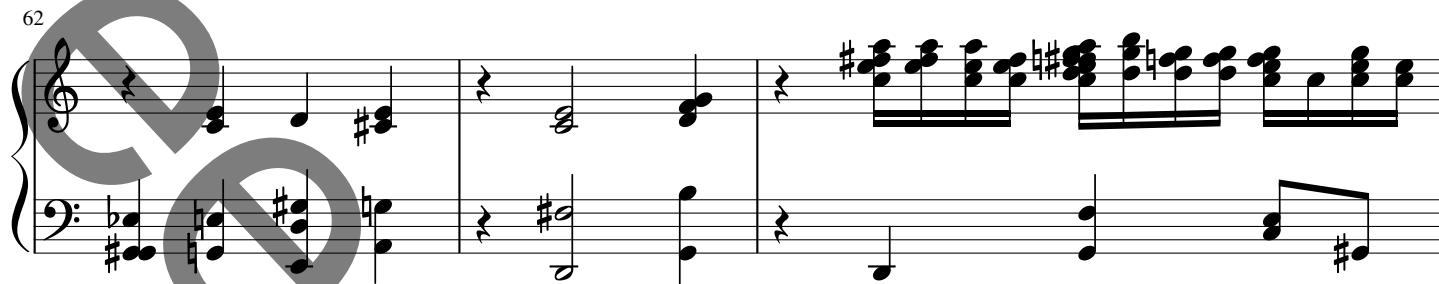
53



58



62



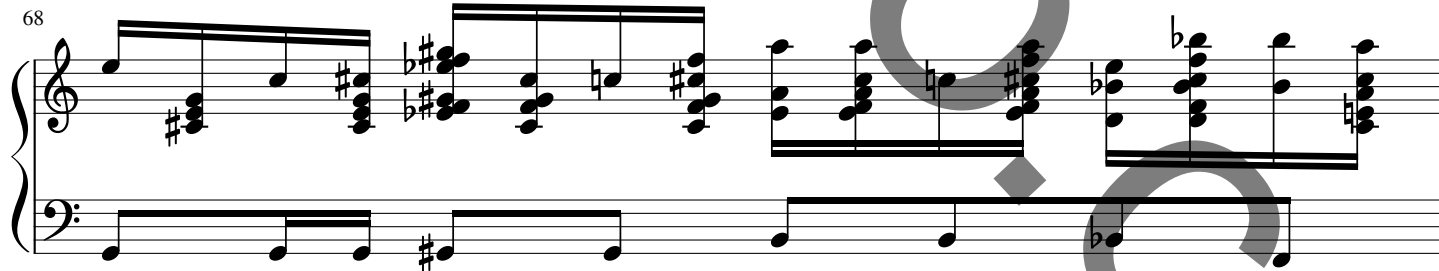
65



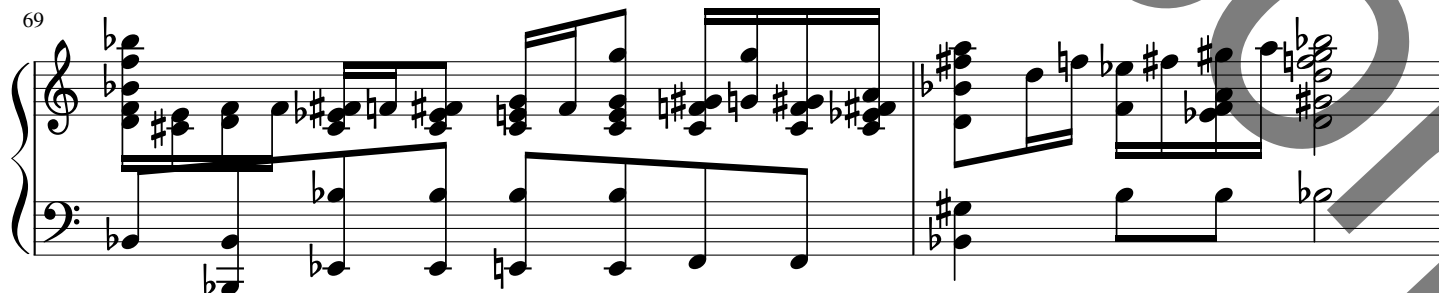
67



68



69



71

Measures 71-73. Treble clef: Measure 71 has a whole rest, followed by chords of Bb2, Eb3, and Ab3. Measure 72 has a descending line of Bb4, Ab4, Gb4, Fb4, Eb4, and D4. Measure 73 has a descending line of C4, Bb3, Ab3, Gb3, Fb3, and Eb3. Bass clef: Measure 71 has a whole rest, followed by chords of Bb2 and Eb3. Measure 72 has a whole rest, followed by chords of Bb2 and Eb3. Measure 73 has a whole rest, followed by chords of Bb2 and Eb3.

74

Measures 74-75. Treble clef: Measure 74 has a whole rest, followed by chords of Bb2, Eb3, and Ab3. Measure 75 has a descending line of Bb4, Ab4, Gb4, Fb4, Eb4, and D4. Bass clef: Measure 74 has a whole rest, followed by chords of Bb2 and Eb3. Measure 75 has a whole rest, followed by chords of Bb2 and Eb3.

76

Measures 76-77. Treble clef: Measure 76 has a whole rest, followed by chords of Bb2, Eb3, and Ab3. Measure 77 has a descending line of Bb4, Ab4, Gb4, Fb4, Eb4, and D4. Bass clef: Measure 76 has a whole rest, followed by chords of Bb2 and Eb3. Measure 77 has a whole rest, followed by chords of Bb2 and Eb3.

78

Measures 78-79. Treble clef: Measure 78 has a whole rest, followed by chords of Bb2, Eb3, and Ab3. Measure 79 has a descending line of Bb4, Ab4, Gb4, Fb4, Eb4, and D4. Bass clef: Measure 78 has a whole rest, followed by chords of Bb2 and Eb3. Measure 79 has a whole rest, followed by chords of Bb2 and Eb3.

80

Measures 80-81. Treble clef: Measure 80 has a whole rest, followed by chords of Bb2, Eb3, and Ab3. Measure 81 has a descending line of Bb4, Ab4, Gb4, Fb4, Eb4, and D4. Bass clef: Measure 80 has a whole rest, followed by chords of Bb2 and Eb3. Measure 81 has a whole rest, followed by chords of Bb2 and Eb3.

83

Measures 83-85. Treble clef: Measure 83 has a whole rest, followed by chords of Bb2, Eb3, and Ab3. Measure 84 has a descending line of Bb4, Ab4, Gb4, Fb4, Eb4, and D4. Measure 85 has a descending line of C4, Bb3, Ab3, Gb3, Fb3, and Eb3. Bass clef: Measure 83 has a whole rest, followed by chords of Bb2 and Eb3. Measure 84 has a whole rest, followed by chords of Bb2 and Eb3. Measure 85 has a whole rest, followed by chords of Bb2 and Eb3.

86

3

Measures 86 and 87 of a musical score. Measure 86 features a treble clef with a key signature of one sharp (F#) and a bass clef with a key signature of one flat (Bb). The treble staff contains a triplet of eighth notes (F#, A, C) followed by a quarter note (E) and a half note (G). The bass staff contains a quarter rest followed by a quarter note (F#), a quarter note (A), and a half note (C). Measure 87 continues the treble staff with a quarter note (E), a half note (G), and a quarter note (F#). The bass staff contains a quarter note (F#), a quarter note (A), and a half note (C).

88

Measures 88 and 89 of a musical score. Measure 88 features a treble clef with a key signature of one sharp (F#) and a bass clef with a key signature of one flat (Bb). The treble staff contains a quarter note (F#), a quarter note (A), a quarter note (C), and a quarter note (E). The bass staff contains a quarter note (F#), a quarter note (A), and a half note (C). Measure 89 continues the treble staff with a quarter note (E), a quarter note (F#), a quarter note (A), and a quarter note (C). The bass staff contains a quarter note (F#), a quarter note (A), and a half note (C).

90

3

Measures 90 and 91 of a musical score. Measure 90 features a treble clef with a key signature of one sharp (F#) and a bass clef with a key signature of one flat (Bb). The treble staff contains a quarter note (F#), a quarter note (A), a quarter note (C), and a quarter note (E). The bass staff contains a quarter note (F#), a quarter note (A), and a half note (C). Measure 91 continues the treble staff with a quarter note (E), a quarter note (F#), a quarter note (A), and a quarter note (C). The bass staff contains a quarter note (F#), a quarter note (A), and a half note (C).